

INDUSTRY

Regupol®

Vegetation control mats

Vegetation-stop

no herbicides, no tensides,
no mowing



Regupol
(Australia) Pty. Ltd.

www.regupol.com.au

Growth-inhibiting mats



Deutsche Bahn AG



Tested by Deutschen Bahn AG for suitability and reliability

For decades, growth-inhibiting mats made of Regupol® have been an established product for avoiding unwanted vegetation. Their use avoids the unpopular use of herbicides, prevents

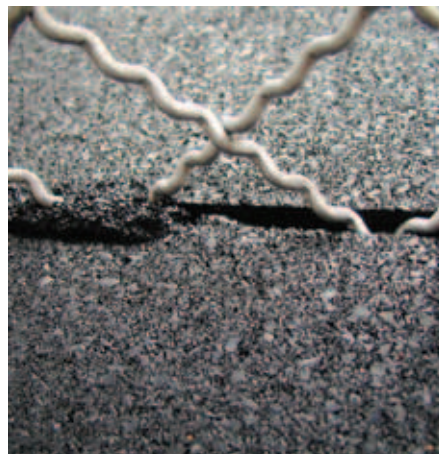
unwanted growth in the long term and eliminates the need for frequent mowing. The mats prevent the penetration of UV light so that plants under the mats cannot grow. The mats are permeable

to water, thus preserving microbial soil life and avoiding erosion. The weight of the mats means that they lie safely and firmly in position, and their material composition means that they do not rot.



Possible use: railway

Growth inhibiting mats made of Regupol® are used at high-speed tracks, at points and at signal systems where in the past, high train frequencies have made it necessary to close down the tracks during mowing work in the interests of staff safety. The mats are also ideal as working surface and for service paths. As shown on the left, a length of 1,000 m² has been installed as service path for the car train facility in Westerland/Sylt. Here the convincing effect of the mat consists not only in inhibiting vegetation growth but also in creating a non-slip surface.



Possible use: fencing

Even where fences are anchored into the ground for security reasons, permanent vegetation control solutions are possible by sealing the mats at the wire and pillar with a special joint filler. Normally the swiftest method of installation is to push the material through under the fences.



Technical details

Material basis: elastomer grain compound with special modification to inhibit vegetation growth, available on rolls at a width of 1,250 or 1,500 mm. 6 – 25 mm thick

Customised mats in special dimensions cut out to fit around posts etc. are also available on request. Patent No.: DE 100 37986



Possible use: airports

Navigation lights, signs, fences and other facilities no longer need any maintenance. It is sufficient to check from a passing vehicle that nothing is damaged. Important: the reduction in mowing means that fewer flocks of birds are attracted.



Other possible uses:

- Private gardens
- Plantations, garden centres
- Buildings/premises needing protection, high-security areas such as barracks, industrial premises, embassies, etc.
- Transmitter systems
- Verges of roads and highways
- Building sites and roadworks



Regupol®



Regupol® is the material used by BSW GmbH to produce many different flooring and sealing systems for industrial and private use. Regupol® is a mixture of rubber and polyurethane. The rubber is processed at BSW's production sites to various different formulations according to

the specific requirements. Regupol® products are versatile, durable, strong, do not pose a health hazard and completely recyclable. Individually manufactured to order, customised packaging and storage provide fast solutions to specific application problems.

**BSW's programme also includes:
heavy-duty flooring for outdoor areas and
workplaces**

Flooring made of Regupol® for outside areas and workplaces withstands even the toughest loads. It is easy to install and ideal for both temporary use and for permanent installation. It is elastic and non-slip, thus making an important contribution to staff health and safety. The flooring is available in different thicknesses and colour schemes.

**BSW GmbH
(Berleburger Schaumstoffwerk)**

has been using Regupol® and Regufoam® to manufacture materials for the building and construction industry for more than 30 years, including the well-known construction protection mats, footfall insulation, vibration dampening, safety tiles and floor coverings. But BSW can do much more besides. The range of products for sports facilities is just as comprehensive as the programme for the building and construction industry. Here too

BSW is one of the international market leaders. Regupol® and Regufoam® are registered trademarks of BSW. Regupol® and Regufoam® are manufactured and sold by BSW in Germany and by Regupol Australia Pty.

www.berleburger.de

More information about our other products is available on our website. Here you can also order product samples online, take a look at a reference list and contact your BSW advisor directly.



Regupol
(Australia) Pty. Ltd.

Unit 1, 5 Cary Grove
MINTO NSW 2566
T: (02) 9820 1233
F: (02) 9820 1279
E: sales@regupol.com.au
W: www.regupol.com.au

Regupol®

REGUPOL® A LEADING GLOBAL BRAND OF ENVIRONMENTALLY RESPONSIBLE IMPACT SOUND ACOUSTIC UNDERLAYS & RUBBER FLOORING SYSTEMS - CREATE HEALTHY PLACES TO LIVE & WORK.

**"Regupol® recycled rubber
technology at its best"**



green building council australia
MEMBER