

REGUPOL® ACOUSTIC UNDERLAY COLLECTION

ACOUSTIC SYSTEM FOR T&G/OVERLAY TIMBER OVER PLYWOOD

with Regupol® K225 5mm

Regupol®

Variofoam®



Regupol
Australia

Regupol® K225 5mm

The **Regupol® K225 5mm** is a soundproofing acoustic underlay manufactured from recycled SBR rubber and cork, bound with polyurethane. The product composition produces an effective acoustic barrier to install parquet and timber floors directly to the surface finish. The cork and rubber combination ensures excellent cohesion between the polyurethane adhesive, the acoustic underlay and the timber floor.

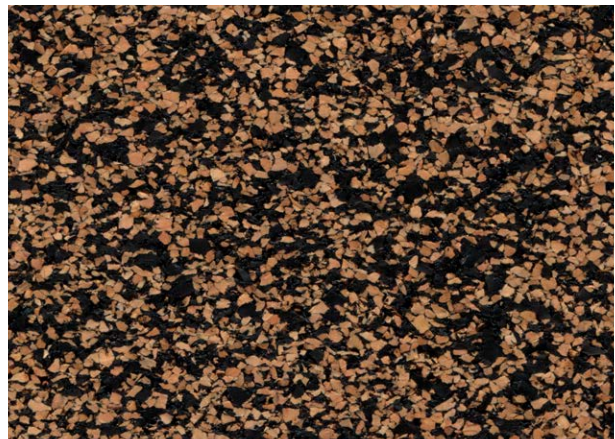
Regupol® K225 5mm Impact Sound Acoustic Underlay has been installed in some of the world's finest multi-residential buildings providing a good level of impact sound reduction under timber flooring.

Benefits include:

- Offers long term performance without collapse or bottoming out
- Minimal creep, even under high loads
- Quick and easy to install
- Minimises construction heights
- High quality and exact material thickness
- Suitable for use with under floor heating
- Protects expansion joints
- PVC Free
- Available in modular tiles for fast installation
- Excellent cohesion qualities
- Made from recycled materials
- German quality guaranteed
- Manufactured and certified to OHAS 18001:2007, DIN ISO 9001:2008, DIN ISO 14001:2004 Management Systems
- A Good Environmental Choice Australia certified sustainable product (GECA)
- Specify this acoustic system using NATSPEC



Typical application under T&G and overlay timber flooring



Regupol® K225 5mm impact sound acoustic underlay

Product Data

Roll Length	20lm
Roll Width	1.0m
Modular Tiles	1050mm x 500mm
Thickness	5mm

Acoustic Performance

Regupol® K225 is a soundproofing acoustic underlay designed to isolate approved floor finishes from the main structure of the building, reducing impact energy generated by general footfall.



NOTICE: Test data is based on periodical testing of test specimen taken from the actual manufacturing process and show the average values measured. The publishing of these technical data does not relieve the user of the necessity to test the relevant product for physical fitness based on a specific application.

T&G/Overlay Timber Floors over Plywood

with Regupol® K225 5mm

This system reflects a typical residential application with approved T&G Overlay Timber Flooring. For all other applications please contact Regupol's Technical Division. Please note that drawings are not to scale and are for illustration purposes only.

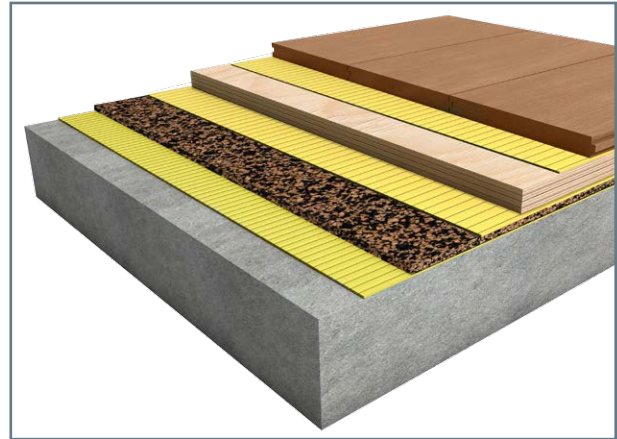
Adhesive and Sealer Information



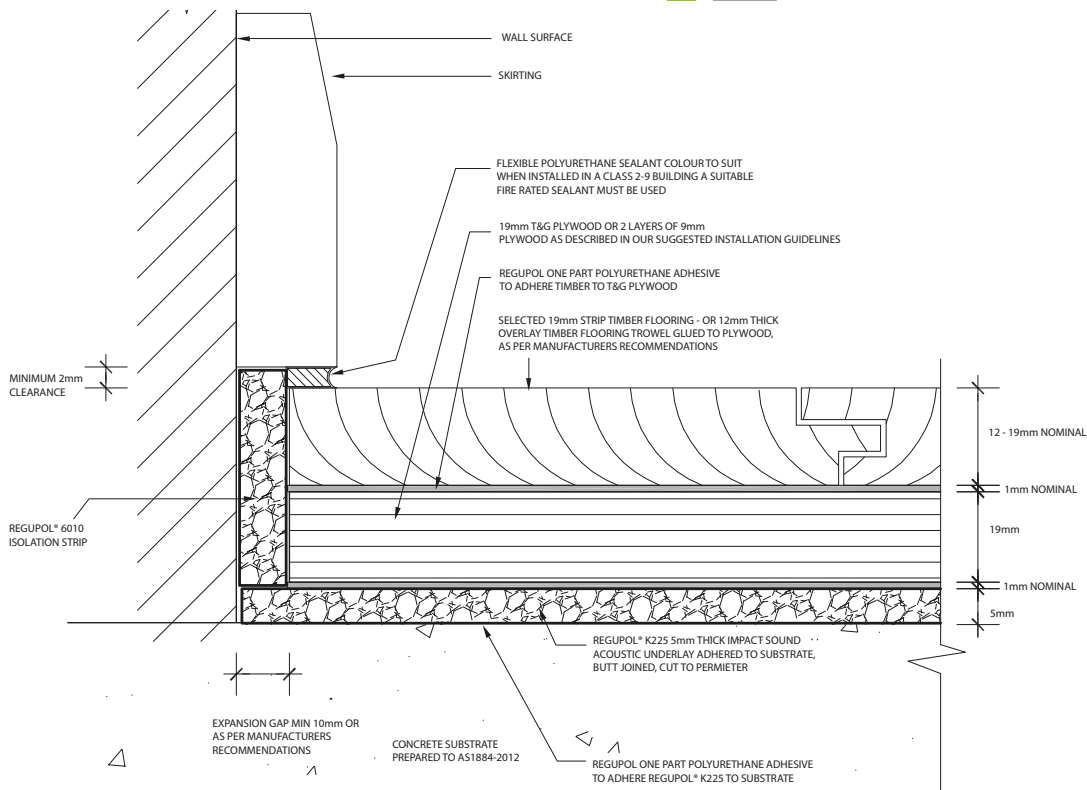
Regupol One Part Polyurethane Adhesive is an elastomeric moisture cured, solvent free polyurethane adhesive. The adhesive is used to adhere Regupol® Acoustic Underlay's in multi-residential living to soundproof timber and tiled floors.



Regupol Two Part Water Based Epoxy Moisture Sealer is a high performance; water based two component epoxy moisture and vapour barrier formulated to prevent water seepage and permeation in building and construction substrates. Use when relative humidity exceeds the required levels.



- 1 T&G or Overlay Timber Flooring
- 2 Regupol One Part Polyurethane Adhesive
- 3 19mm T&G Plywood or 2 Layers of 9mm Plywood
- 4 Regupol One Part Polyurethane Adhesive
- 5 Regupol® K225 5mm Acoustic Underlay
- 6 Regupol One Part Polyurethane Adhesive
- 7 Concrete Substrate Prepared to AS1884-2012



DISCLAIMER: The above information is given in good faith as a suggested guide in specifying Regupol® Impact Sound Acoustic Underlays, no guarantee or warranty is expressed or implied. Any circumstances not covered by this guide should be referred to Regupol (Australia) Pty Limited or its Distributors for any particular attention required. There are, however, many factors that may affect the outcome of projects using our products that are beyond our control. Regupol (Australia) Pty Limited cannot be responsible for poor climate conditions, inadequate surface preparation, poor application techniques, not observing curing times, improper thinning of adhesives or any variable beyond our control. No liability is accepted by Regupol (Australia) Pty Limited, our employees, distributors, representatives or agents, for any loss or damage, direct or indirect, that may result from using the information and/or suggestions as actual conditions for use that are beyond our control. All materials should be checked/tested for their suitability to the prevailing site conditions.